

8 July 2011

PRESS GO REQUEST TO ASSIST KNOX WAITARA SESSION RECOMMENDATION

Background

Knox Waitara is seeking a \$300,000 contribution from St John's to help build a new church complex.

This project is actively supported by Press Go, which helps to facilitate significant growth initiatives in the wider church. Press Go is also contributing \$500,000 (their biggest commitment to date).

Background papers are available on the St John's website, and printed copies are available in the church foyer.

You can also read more about this project on the PCANZ website:

<http://www.pcanz.org.nz/for-parishes/press-go-for-church-growth/press-go-initiatives/knox-waitara>

Press Go made an initial presentation to Session on 1 June 2011.

Following Finance Committee confirmation of our ability to fund this request, Session Executive met on 22 June 2011 to consider how we should respond.

These recommendations were put to Session on 4 July 2011, and were supported unanimously.

As a result, a congregational meeting has been called after the morning service on Sunday 24 July 2011 to approve the recommendation as set out below.

Recommendation

It is recommended that a \$300,000 contribution is made by St John's towards the redevelopment of the Knox Waitara church complex (this will be paid in instalments of \$60,000 per annum over a five year period).

It should be noted that:

- Representatives from Knox Waitara have been invited to make a brief presentation and to answer any questions about the project at the congregational meeting. They will leave the meeting while the congregation discusses and votes on the recommendation.
- Session encourages interested members of the congregation to take an active role in developing our relationship with Knox Waitara.

- It is unlikely that St John's would be able to support any other Press Go initiative during this five year period.

Supporting comments

The following comments are made in support of this recommendation:

- In earlier planning meetings, Session has previously identified three areas of focus for mission and outreach within St John's: local, national and international.
- We now have very active local (BGI, DCM, Presbyterian Support and the VUW lectureship) and international ('Arthur and Julia', India and Myanmar) programmes.
- Press Go has always been seen as being one of the most appropriate ways of supporting a national initiative within the church, subject to the identification of a suitable project.
- A key to the recent success of these local and international programmes has been the active involvement and commitment of various people within the congregation. This is seen as being a vital part of any mission and outreach opportunity.
- Press Go was established by the General Assembly to review and facilitate requests from parishes and groups for assistance with significant growth initiatives in the mission of the wider church. Press Go has funds which the Press Go Board can approve for such initiatives, and a brief to approach parishes for support where appropriate.
- St John's said to the Press Go Board when it was first established that it would prefer to consider a request for a specific project than make a general donation to Press Go funds.
- The request to support Knox Waitara came through Press Go, and is the first request that has been made. The Press Go Board has assessed the project against criteria developed through wide consultation, and will monitor the project closely as well as providing regular updates to donors.
- The material provided from Press Go and Knox Waitara show that there has been sound and comprehensive planning for this project.
- Knox Waitara has a proven record of expansion of its mission and growth in the local community and it is this growth which has necessitated the redevelopment of their buildings and site.
- The commitment of the Knox Waitara congregation to its mission and outreach programmes – and what has already been achieved to date – is impressive. This is an opportunity for St John's to learn from these programmes, and to share our own experiences.

- Knox Waitara has already been pledged the bulk of the funding (\$2.4m). It has amazing support from its congregation (\$1m from around 70 families over a period of years) and from community organisations (\$450,000), such as the Taranaki Electricity Trust, who recognise the value of Knox Waitara's work in the community. Press Go is also contributing \$500,000 (their biggest commitment to any Press Go initiative).
- Bridging finance is available from the Presbyterian Savings and Development Society to enable the redevelopment to commence subject to sufficient pledges being secured.
- All churches in New Zealand have a responsibility for the growth of mission, not just in their own parish, but throughout New Zealand where God's Spirit is seeking to grow the work of the church.
- The Finance Committee has confirmed that funding the project at \$60,000 a year for five years is financially affordable for St John's without restricting our ability to undertake other work that had been forecast such as the refurbishment of Spinks cottage, the provision of dedicated youth space, and the refurbishment of the organ (which is probably at least two or three years away before this cost starts to be incurred).

Paul Ramsay
Session Clerk

KNOX CHURCH WORSHIP YOUTH AND COMMUNITY CENTRE, WAITARA

Knox Church in Grey Street has long been a beacon for a strong community in Waitara. We have an active church ministry and one of the few local buildings that offer a variety of facilities suitable for different community activities.

However, church is not just a building. We are a Doing Church. Yes, we have a vibrant worship community and our services are often overflowing, but it is the church's community initiatives that are equally important to us.

A key to the success of our community facing ministries is our Child and Family Coordinator. As well as coordinating all work with under 20 year olds, she takes a personal interest in many at-risk families. CYFS often refers children to our programmes.

The Ministry of Education has all of Waitara schools at decile 1 or 2, and the town's unemployment rate is twice that of the Taranaki region as a whole.

However, after being involved in our Children and Youth Programmes, many youth have left the cycle of unemployment to become young people living with a purpose. Our kids become the leaders at High School and many go on to tertiary education. All this is in a town where nearly 50 percent of the population has no formal qualifications.

The people of Knox Church are passionate about Waitara. Our church hosts community groups every day. In addition to the Children and Youth programmes, we run Parents' and Senior groups. Our building and facilities are used to the limits of their capacity.

Unfortunately our auditorium is old. After almost a hundred years of constant use, it has potentially become a health and safety risk. The engineers say any alterations will be very expensive just to meet earthquake standards, and the building won't be safe for much longer. They tell us it will be better to start from scratch.





This is a great opportunity. We have found that our current buildings are too small and not designed for the purposes we need to use them for.

In 2007 we set up a committee to investigate the future building requirements of the church. We have bought the land next door and designed a building that can meet the needs of Knox and our mission in Waitara today and into the future.

We want people to feel welcome and our home has to reflect that.

The new building will include a new auditorium that will seat up to 280, a large youth hall, other spaces for the children's activities and both small and large community meeting rooms. It will provide a new, large, multipurpose facility currently lacking in the community. We already have interest expressed by community groups such as the schools, the Police and Plunket about using the new building.

The cost of the project is \$2,400,000 and we have set the ambitious goal of completing the building in 2012.

We have a commitment of \$500,000 from Press Go, the Presbyterian mission funders, and as Church members we have pledged another \$1,000,000. But to build what is needed, we need others to support us.

We call upon the commitment of individual benefactors, corporate sponsors, grant-making trusts and the gifts of the public at large for the new Knox Church Worship Youth and Community Centre.

With your help we can continue to grow our mission and continue to invest in the future of the Waitara community.



Our Journey so far...

For many years Knox has run Youth Group, Children's Church and Boys' Brigade as part of its outreach to children and youth. In the early 1990's Rainbow Playgroup was started as the church increased its commitment to this ministry.

2003 - Youth Group coordinator employed part time. Numbers attending increase to 40 and continues to grow. Dynamite Bay and Boys' Brigade also attracting large numbers.

2004 - Jennie McCullough employed as Child and Youth and Families Coordinator.

- Intermediate girls group started

2005 - Youth programme begun by Knox kids at Waitara High School. Principal congratulates Knox families for their work in the school.

- Boy's Brigade becomes Dynamite Bay Xtreme (DBX)

2006 - 'Date with Den' started for 'senior' community members.

- DBX Girls group started.
- God's Unit begun for intermediate aged children, in conjunction with St Joseph's Church
- Captain Tuatara's Holiday Club started

2007 - Audit of the building and facilities highlighted safety issues and inadequacies in capacity.

- Mumzone started for Rainbow mums and others with children in Knox programmes

2008 - Leadership training started for student youth leaders

- Strategic needs assessment conducted on buildings. Draft plans completed and concept approved by the Church.

2009 - Adjacent property purchased debt-free by church members.

- Preliminary submission to Press Go (Presbyterian funding body) results in a pledge of \$500,000 conditional on other funds being raised.

2010 - Congregation at Knox Church pledges over \$1M for the project.

Endorsements

"It gives me great pleasure to endorse this final phase of fund raising for a new Waitara Church and Community Facility. When Press Go visited Waitara in 2009 we were so impressed by the work the people of the Church were doing to grow the Kingdom of God, particularly with the local youth, that we agreed to support them with a \$500,000 grant. We congratulate them on the phenomenal effort they have made in raising more than another \$1million themselves.

I would now like to encourage other Presbyterians and New Zealanders to support this final fund raising so that this facility can be opened to the glory of God and for the blessing and benefit of the people of Waitara".



Rev Ray Coster - Chairman of Press Go
- Moderator Designate of the Presbyterian Church of Aotearoa
New Zealand

"As both the Minister of St Andrews, New Plymouth and as Moderator of Taranaki Presbytery I heartily recommend to you the building project of Waitara Presbyterian Church. They are building for the future of their community, and will have a community friendly complex that will be able to be used by Church and community alike. Their enthusiasm and "self help" drive is to be highly commended. They have worked hard to make this happen. They will be able to minister effectively in a wide and varied socio economic, and multi-cultural environ. For their foresight, vision and sacrificial commitment to this project they are to be congratulated and any assistance you can render to assist in making this reality, will be gratefully appreciated. Presbytery believes in what they are doing and have put \$5,000 towards it. We wish the Church and township of Waitara well as the project continues to press on".



Rev Kim Francis
Moderator, Taranaki Presbytery.

"It is my conviction that there is a greater power at work here. This is more than human initiative, it's a church family saying to the people of Waitara there is a hope and a future and we are prepared to invest our lives and resources in it".

Rev Dennis Flett
Minister, Knox Waitara





"I support the efforts of Knox Church in developing their church complex/worship, youth and community centre and their contribution to the Waitara, and New Plymouth District Community. I wish them well in their fundraising efforts".

(Hon.) Harry Duynhoven
Mayor New Plymouth District

"While we have no direct association with the church, we have liaised with those running the youth groups and are very familiar with the programmes they run. These groups deal consistently with up to 100-120 young people, 50 of whom attend Waitara High School. The youth programmes offer practical, mentor-based support and a wide range of activities to Waitara youth and we endorse the valuable service they provide.

The youth group has proven to be a valuable resource for our secondary students and within our community this organisation would be one of the most dynamic with constant activities and programmes that appeal to a wide range of youth.

We support them in this fundraising application because they have such a positive impact on our young people".

Jenny Gellen
Principal, Waitara High School



"I am writing in support of the Knox Church Development Programme. I am delighted to learn that the church has plans to develop their current site to improve the facilities and enhance the services they deliver to the community. In my role as Resource Teacher Learning and Behaviour (RTLB) I have referred students to the after school programmes on several occasions. The programmes are very well staffed and coordinated. The staff go the extra mile to support the students and their family, including transport home after the sessions if parents are not able to collect their child. Knox Church provides much needed support for local families through the after school programmes and I am very happy to support their current project".

Jenny Portway

North Taranaki Resource Teachers: Learning and Behaviour



"I am writing in support of Jennie McCullough and the programmes that she is running through Knox Church in Waitara. As a social worker within the community I have referred several families to this service and have been very impressed with the service that they have received. The general feedback from those I know who have been associated with this programme is very enthusiastic and positive.

The project is vital for a community like Waitara where there is a lot of unemployment and potential for criminal activity, especially amongst the youth. The programme offers a variety of positive programmes after school and through the holidays for our young people of Waitara"

Phil Henderson

Social Worker in Schools

Tu Tama Wahine O Taranaki



Project Budget

Ahead Buildings Ltd quote		1,937,026
Variations allowance	5%	96,851
Contingencies	10%	193,703
Demolition		30,000
Fencing, landscaping, decking		38,000
Carparking		10,000
Legal and Consents		17,000
Geotech		1,000
Signage		3,000
Concept Plans		5,321
Fitout- furniture and equipment		90,000
		<hr/>
		2,421,901
		<hr/>

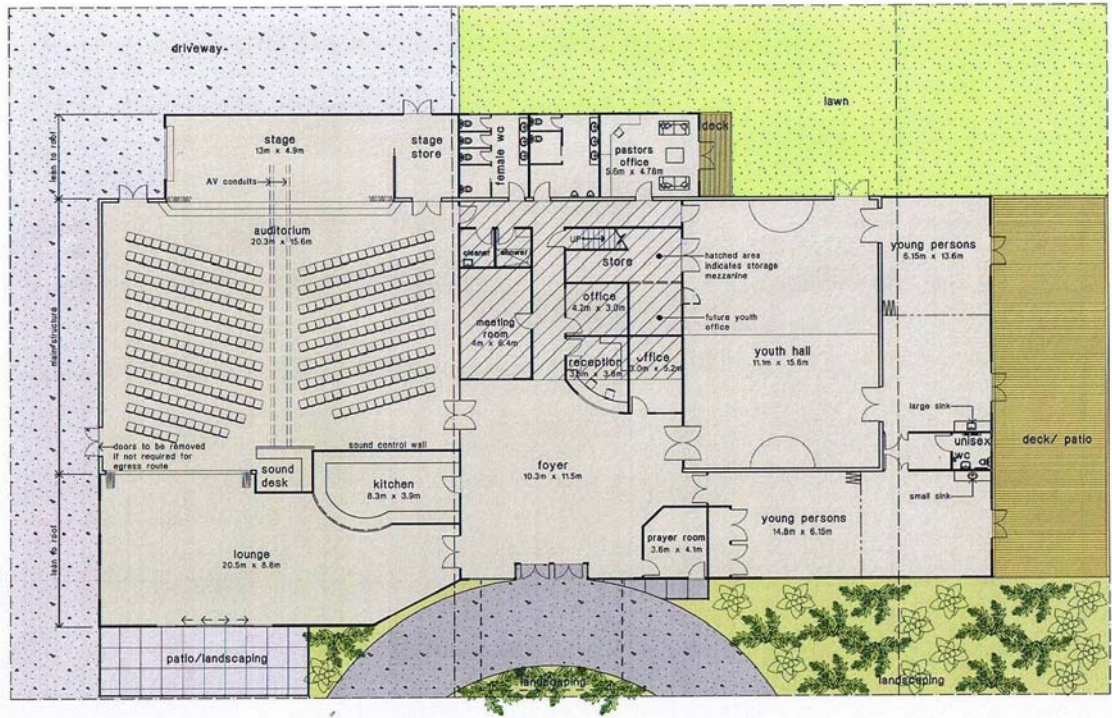
Funding Plan

Source	Amount
Press Go	\$500,000
Congregation/Local giving	\$1,010,000
Taranaki Electricity Trust	\$300,000
Southern Trust	\$150,000
NZCT	\$70,000
GIK and other Fundraising	\$70,000
Project Shortfall	\$300,000
Total	\$2,400,000

The Planning Brief

- Auditorium that seats 280, with good sound and lighting equipment suitable for a range of community uses
- Café/lounge area for 150 (approx)
- Hall/gymnasium, with sprung floor suitable to safely play games such as basketball and netball
- Youth/children/community facilities
- Prayer Room
- Meeting Room
- Offices for up to 4 staff
- Most spaces capable of being multifunctional

Plan



Current Church Use

Regular events:

Weekly

Sunday:

Worship attendance (2009 June Stats)

Adults	99
Children	22
Total	121

Tuesday:

Dynamite Bay Xtreme Boys and Girls (7-11 yrs)	Children	50
	Leaders	12

Wednesday

Intermediate Age youth	20
High School Age youth	50

Thursday

Rainbow playgroup (preschool)	Parents	50
	Children	50
Music team		12

Non Weekly

APW		10
'Date with Den' seniors	6 weekly	25
Waitara Garden Circle	monthly	60
Alzheimers and dementia group		

Irregular:

CYFS/Police family group conferences
Maori Postal Sunday School events
Large community focused events (run by church)
Parent Toolbox courses
Alpha Course
Careforce Courses (e.g. Valiant Man)
Sunday night hospitality based forums
Various other conferences, courses and forums